

CORRECTIONS

Evidence for an Equilibrium Intermediate in the Folding–Unfolding Pathway of a Transforming Growth Factor- α –*Pseudomonas* Exotoxin Hybrid Protein, by Jacqueline O'Brien Gress, Dorothy Marquis-Omer, C. Russell Middaugh, and Gautam Sanyal*, Volume 33, No. 9, March 8, 1994, pages 2620–2627.

Page 2624. In the legend to Figure 4, the symbols \blacktriangle and \blacklozenge for the data representing f_{app} from CD and f_{app} from HPSEC have been switched. The last sentence of this legend should read as follows: \blacksquare , f_{app} from fluorescence; \blacklozenge , f_{app} from CD; \blacktriangle , f_{app} from HPSEC. This correction applies to both panels A and B.

Direct Photolinkage of GTP to the Vaccinia Virus mRNA (Guanine-7-) Methyltransferase GTP Methyl Acceptor Site, by Edward G. Niles,* Linda Christen, and Meghan A. Higman, Volume 33, Number 33, August 23, 1994, pages 9898–9903.

Page 9902. Due to a printing error, panel C of Figure 8 was omitted. The corrected figure is reproduced below:

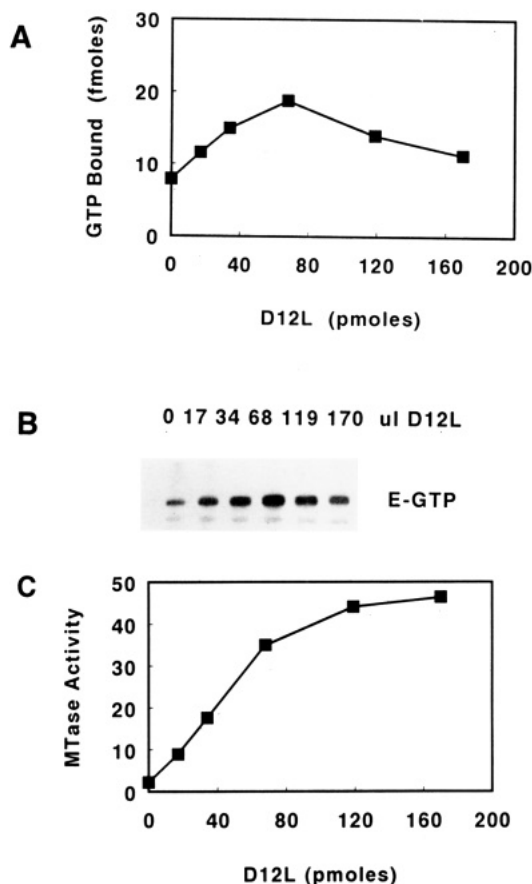


FIGURE 8: Determination of the efficiency of GTP photolinkage to D1R⁴⁹⁸⁻⁸⁴⁴ in the presence of varying levels of D12L. Incubations were set up and treated as described in Figure 4, containing partially purified D1R⁴⁹⁸⁻⁸⁴⁴ and varying amounts of D12L. (A) A graphical representation of the efficiency of GTP photolinkage to D1R⁴⁹⁸⁻⁸⁴⁴ at different levels of D12L. (B) Autoradiograph of the gel electrophoretic separation of the modified methyltransferase subunits; E-GTP denotes the modified D1R⁴⁹⁸⁻⁸⁴⁴. (C) Graphical representation of the reactivation of mRNA (guanine-7-) methyltransferase activity by D12L addition.